



The European Research Infrastructure  
for Biological and Biomedical Imaging

**UK Light Microscopy Facility Meeting 2021**

*January 6<sup>th</sup> 2021*

Dr. Johanna Bischof, Scientific Project Manager,  
Euro-BiolImaging



[eurobioimaging.eu](http://eurobioimaging.eu)



[info@eurobioimaging.eu](mailto:info@eurobioimaging.eu)



[@EuroBioImaging](https://twitter.com/EuroBioImaging)

# The Euro-BioImaging service

- ✓ Euro-BioImaging is a distributed research infrastructure with Nodes across Europe
- ✓ Publically funded, not-for-profit
- ✓ Our Nodes are internationally recognised imaging facilities



15

COUNTRIES &  
INTERNATIONAL  
ORGANISATIONS



25

NODES



100+

SITES



40+

TECHNOLOGIES



- MEMBERS
- OBSERVER
- PROSPECTIVE MEMBERS
- HUB HOSTS
- NODES

# Euro-BioImaging offers:

- ✓ Open access to biological and biomedical imaging technologies
- ✓ Support from expert technical staff
- ✓ Image data repositories and analysis tools
- ✓ Training opportunities for everyone
- ✓ Open to all scientists, independent of area of research, career stage, expertise level and where they work



**EURO  
BIOIMAGING**  
Image life, discover the future

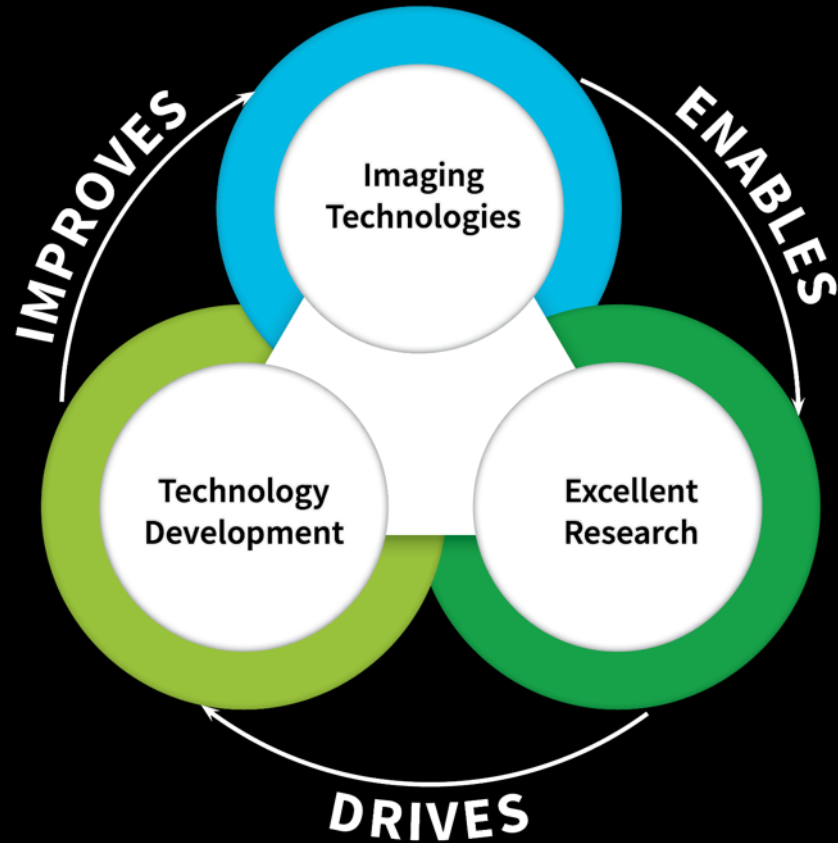
# Access at Nodes

Nodes:

- ✓ Offer access to their unique imaging facilities
- ✓ Provide user training and image data services
- ✓ Are hosted by Euro-BioImaging member countries and EMBL

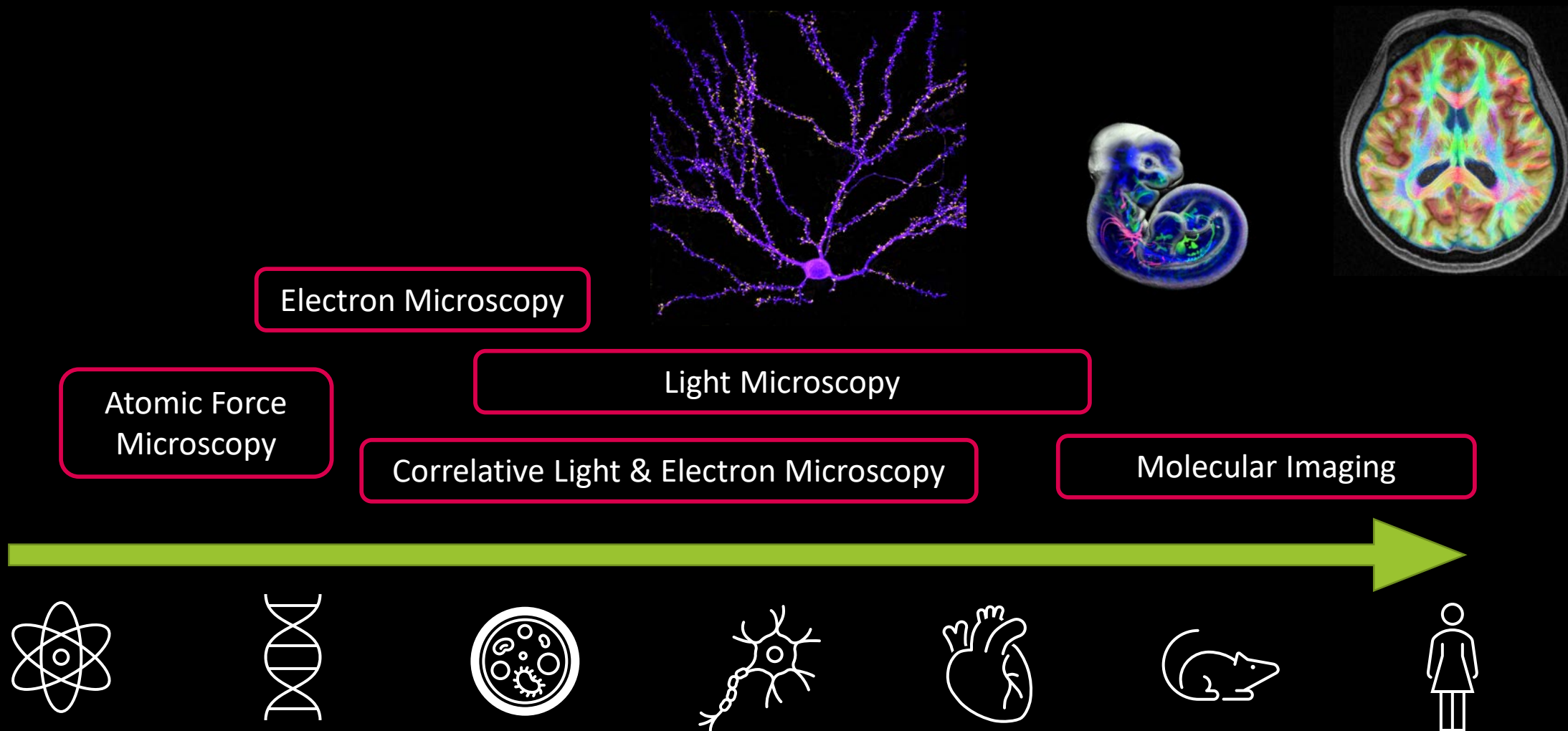


# Supporting Nodes, promoting collaboration and enabling excellent research

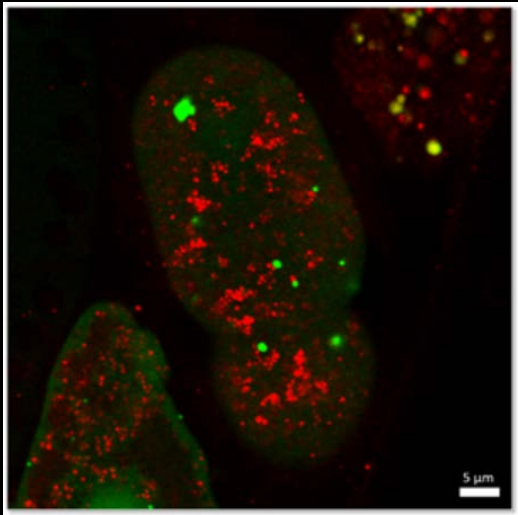


- ✓ Open access to imaging technologies drives the momentum of breakthrough research and buildings bridges between life science communities
- ✓ By hosting external users, Nodes will encounter new knowledge, new challenges and push their systems to new frontiers
- ✓ Nodes and researchers will build new collaborations including those with industry

# The Euro-BioImaging technology portfolio



# User Access example



1. A scientist reads about CARS imaging offered at the Prague Node on the Euro-BioImaging website and contacts us.

2. User gets put into contact with the expert at the Prague Node. They design a remote microscopy experiment.

3. User submits project application on the website. Application gets approved within a few hours.

4. The user sends samples to facility in Prague. They conduct two remote image sessions.

5. User gets data and support with data analysis.

*User country*

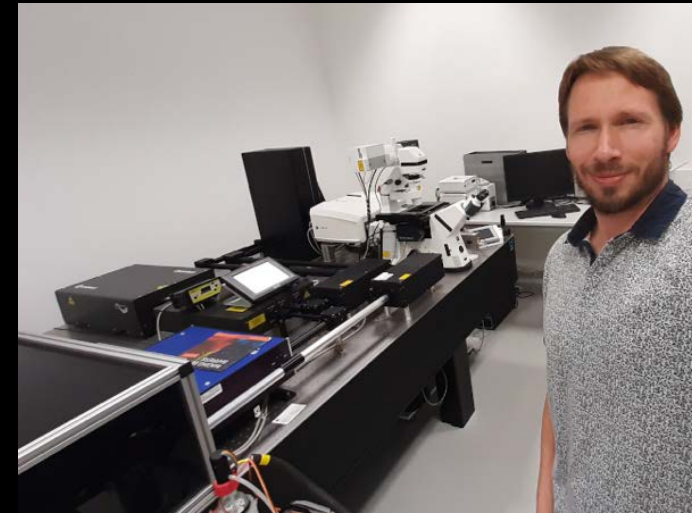


*Node country*



*Technology*

CARS &  
confocal

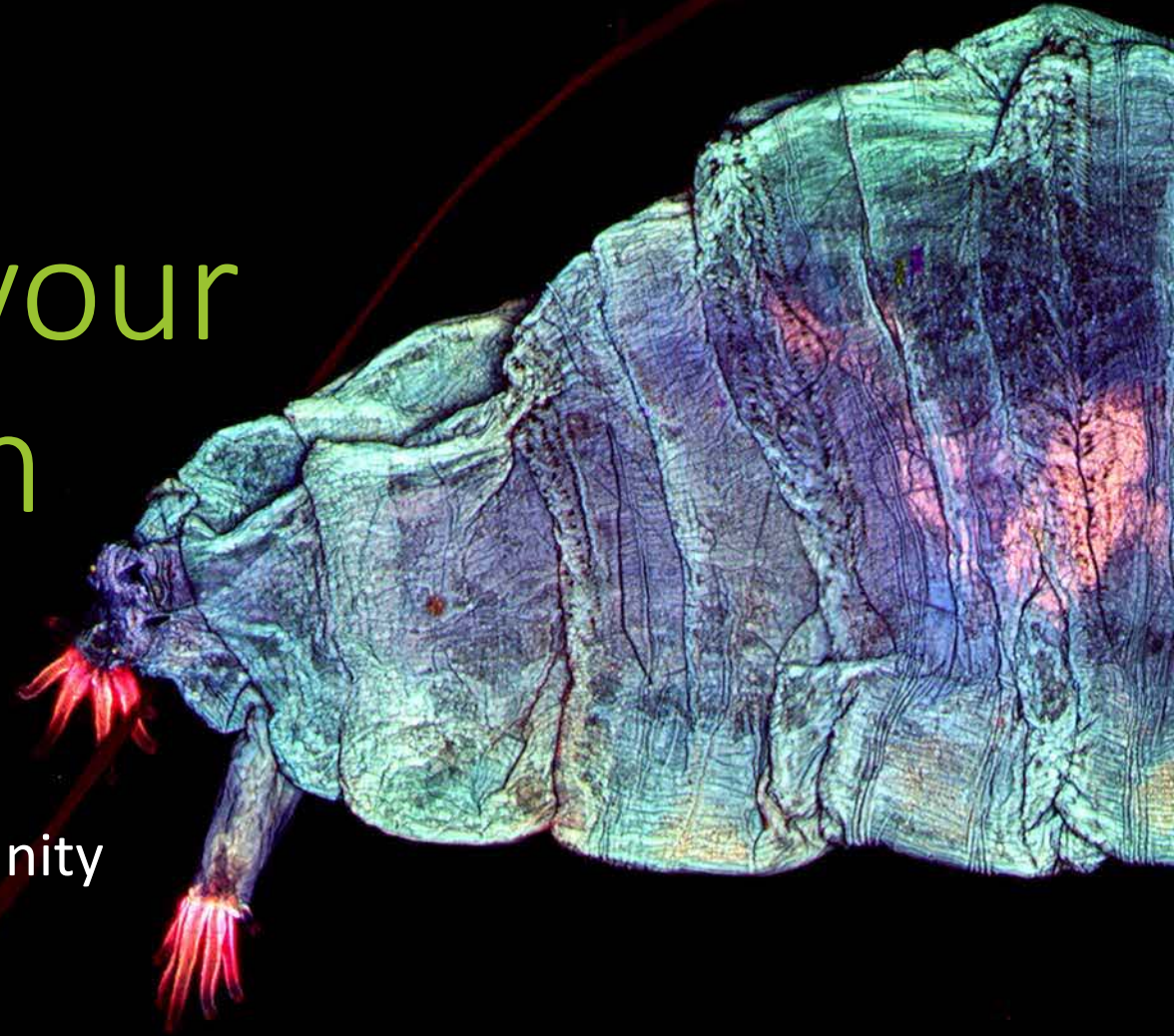


Dalibor Pánek with the CARS machine at BIOCEV



# How can you and your facility engage with Euro-BioImaging?

The Euro-BioImaging Nodes & Friends community





# Highlighting new technologies

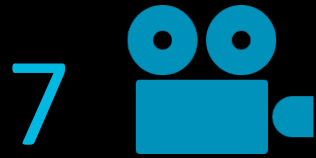
- ✓ Platform to raise awareness within imaging community
- ✓ Showcasing to interested users
- ✓ Proof-of-Concept studies (PCS) to validate open access
- ✓ Outreach for technologies under showcasing and PCS



# Proof-of-Concept Studies in 2020: Communication boost to spread the word about 6 new technologies



Interview articles  
on the Euro-BioImaging  
website.



Short videos for social media.



Recipients of our newsletter  
dedicated to our  
Expanding Technology Offer



Cumulative views on  
social media



Strategic partnership with  
“The Focal Plane” community  
website

Join our weekly virtual Pub meetings  
to learn about the latest developments in  
biological and biomedical imaging



- 08.01. Holistic 3D cellular mapping of mammalian organs by combining Tissue Clearing and Lightsheet Microscopy
- 15.01. Complex Scale Imaging at the Brno Node
- 22.01. BioImaging Master's Programmes: A European Overview
- 29.01. An Introduction to Mass-Spectrometry Imaging
- 05.02. Discovery of new therapy options for Leukemia - A cross-Research infrastructure drug screening project

Join us every Friday @ 13:00 CET!

For more info see: [www.eurobioimaging.eu/about-us/virtual-pub](http://www.eurobioimaging.eu/about-us/virtual-pub)

# Join one of our Expert Groups

## *Communication Expert Group*

- Increasing the visibility of Nodes (help with social media, website, outreach material)
- Promote user access to their services
- Training in external communication

22



Group  
members

13



Core  
Facilities

11



Countries

## *Remote Access and Training Expert Group*

- Exchange of experiences: Solutions, bottlenecks, existing resources (hardware, software)
- Collection & development of materials for remote user training
- Collaboration with Industry Partners

21



Group  
members

13



Core  
Facilities

9



Countries



# Thank you

QUESTIONS?  
Contact us:



[www.eurobioimaging.eu](http://www.eurobioimaging.eu)



[info@eurobioimaging.eu](mailto:info@eurobioimaging.eu)



[@EuroBioImaging](https://twitter.com/EuroBioImaging)

