

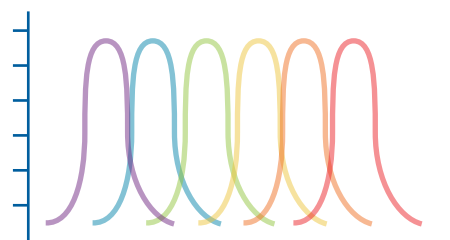
DEFINE AND DETECT YOUR CELLS WITH EASE



Over 13,000 flow antibodies,
kits, and reagents



Exclusive gold standard CD
marker clones



20 custom conjugation
options available



KO validation for specificity and
reproducibility



Expert technical assistance



Free Shipping

Flow Cytometry Antibodies | Conjugated Secondary Antibodies | Isotype Control Antibodies

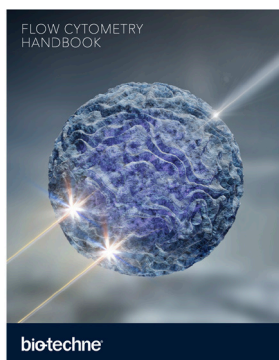
CyTOF-Ready Antibodies | Multicolor Flow Cytometry Kits | Supplemental Reagents

Flow Cytometry Compatible Dyes

SAVE
20%

CREATE AN ONLINE ACCOUNT
novusbio.com/user/register

FLOW CYTOMETRY RESOURCES

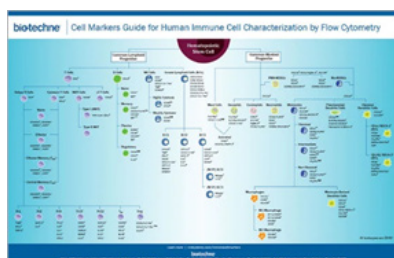


FLOW CYTOMETRY HANDBOOK

Follow our easy step-by-step guide to Flow Cytometry! Perfect for researchers new to the technique, or experienced scientists looking for a quick refresher.



[DOWNLOAD HANDBOOK](#)

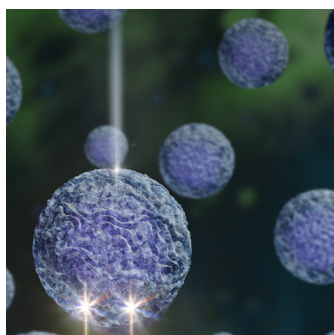


CELL MARKERS GUIDE FOR HUMAN IMMUNE CELL CHARACTERIZATION

Discover the main phenotyping markers used to distinguish different immune cell types or cell type-specific subsets in this mini-poster!



[DOWNLOAD POSTER](#)



NOVUS FLOW CYTOMETRY PANEL BUILDER

Create your panel in 3 easy steps with the panel builder tool! Quickly search for validated antibodies that work with a specific cytometer



[VIEW PANEL BUILDER](#)

Submit a
Review for
REWARDS!

Earn an Amazon e-card!
novusbio.com/rewards



biotechne®
bio-techne.com

R&D SYSTEMS

**NOVUS
BIOLOGICALS**

TOCRIS

**protein
simple**

A&D

exosomed_x

Global info@bio-techne.com bio-techne.com/find-us/distributors TEL +1 612 379 2956 North America TEL 800 343 7475
Europe | Middle East | Africa TEL +44 (0)1235 529449 China info.cn@bio-techne.com TEL +86 (21) 52380373

Trademarks and registered trademarks are the property of their respective owners.

FL_Flow Cytometry UK 2021_STRY0177176