



# **BioImaging North America (BINA)**

# BINA: Who are we?



- A network of optical imaging leaders across Canada, the USA and Mexico, working together to improve all aspects of computer aided microscope-based imaging for the community.
- Provide a North American counterpart to existing national and international networks of imaging scientists.
- Focused on harnessing the experience and expertise of our members.

# Goals of BINA



Provide an open, non-partisan, critical platform of quantitative light microscopy standards.



Establish in depth training and education in bioimaging technologies and core facility management.



Develop programs and advocate for professional recognition of imaging scientists.

# Getting BINA started...

Where did we choose to start?

- **Website**
- **E-mails** to members to share educational information and link people interested in similar techniques and questions;
- **Job shadowing** programs;
- Providing a **North American counterpart** for other international imaging networks and for Global Biolmaging;
- Working together with BiolmagingUK to address the needs of our members during the COVID crisis via critical **virtual community discussions**;
- Setting up an increasing number of active **Working Groups** to address specific areas of need.

# Communications WG

Chair, **Michelle Itano**, UNC, CZI Imaging Scientist



- Website; [www.bioimagingna.org](http://www.bioimagingna.org)
- Social media;
- E-mails;
- Members lists etc.
- Sponsorship;
- Monthly newsletter;
- Promotion of jobs/ educational/training events.

Follow us on Twitter @BioimagingNA

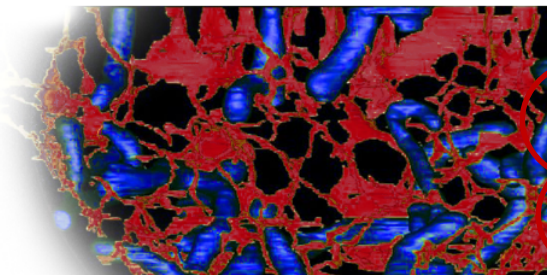
# Monthly newsletter to BINA members

BINA April Update

BA

Bioimaging North America <contact@bioimagingna.org>

Wed 4/15/2020 1:14 PM



OK, so we copied this idea from ELMI and Stefan Terjung....

Hi BINA Members,

We hope you are all doing well and staying safe! Updated recommendations for operating core facilities during the coronavirus pandemic have been released by German BioImaging (updated on 4/1/2020). [Please visit our website to read the full document.](#)



Congratulations to our BINA co-chairs Claire Brown and Alison North and their three international facility director colleagues on their recent review article, "Tutorial: guidance for quantitative confocal microscopy", published in *Nature Protocol*. This publication guides researchers through all aspects of acquiring quantitative confocal microscopy images. [Download and read their publication now!](#)



Talks from the AUROX Microscopy Symposium are now available on their [YouTube channel](#) (speakers include BINA members Claire Brown and Heather Brown-Harding)! Furthermore, BINA has compiled a spreadsheet of additional online resources, remote software access, conference cancellations, live/recorded virtual seminars and more! [BINA Resources during the COVID-19 Pandemic](#)

We will regularly update this resources spreadsheet several times each week, but we need your help to compile as much information as possible! If you know of any resources, webinars, remote software access, etc, [please fill out this quick form to inform us so we can add it to our document!](#)

## Upcoming Opportunities

If you have any information regarding upcoming events (conferences, workshops, meetings, etc.) or other opportunities, please share with us through our [posting submission form](#) so we can feature it on the BINA website. Please note that posting is free of charge.

## Meetings/Conferences

- Virtual OME Community Meeting (May 26-28, 2020)

## Workshops

- 2020 MSC-SMC Symposium (Virtual; June 1-5, 2020)
- Exchange of Experience V (September 7, 2020)

## Webinar Series

- [NEUBIAS Academy](#) (Live Webinars and Courses throughout April)

## Job Openings

- Lead Laboratory Research Specialist at the University of Maryland, Baltimore (Application Deadline: April 15, 2020)
- Scientific Officer at the Advanced Light Microscopy Facility at EMBL Heidelberg (Application Deadline: April 20, 2020)

# Quality Control & Data Management Working Group (QCDM-WG)

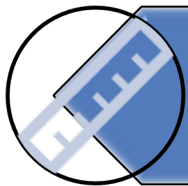
Chaired by **Caterina Strambio di Castillia**, U. Mass. Medical School and CZI Imaging Scientist



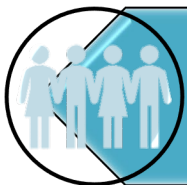
Improve the reproducibility, comparability, downstream analysis and re-use of image data.



Rigorous record-keeping, QC, data management.  
(working closely with QUAREP)



Develop an international consensus including guidelines & tools to facilitate quantitative microscope assessment, calibration, and record-keeping (MetaData).



Promote and disseminate guidelines, best practices and recommendations to the imaging community.



# Diversity and Inclusion WG

Co-chairs, **Gisele Giorgi**, Merritt College, and **Feather Ives**, UC Berkeley



- Providing access for imaging scientists from underrepresented groups to training and work experiences;
- Encouraging inclusive and collaborative research, information-sharing and mentoring;
- Linking geographically remote imaging scientists with colleagues and mentors.



# Training and Education WG

Chair: **Kate Luby-Phelps**, U. Texas Southwestern

**Talk: 14:15, Wednesday January 6, 2021**



- The urgency of forming the T & E WG became clear as facilities all around tried to adapt and operate safely under the new COVID guidelines.

## New working groups under formation:

### Corporate Relations WG

Chair, **Cassandravictoria Innocent**, Boston Childrens' Hospital, CZI Imaging Scientist



### Image Analysis WG

Chair, **Thomas Pengo**, U. Minnesota



# Initial Funding from Corporate Partner Sponsorship

- Companies can become sponsors and advertise technology updates on the BINA website.

[www.bioimagingna.org](http://www.bioimagingna.org)



- BINA gratefully acknowledges the support of its first platinum sponsors:



But obviously we don't expect the companies to fund all our events for ever!

# Funding Opportunities

NSF AccelNet “Network-of-Networks” – applied in 2019 and again in 2020. **WAAAAAAAAAGH!!!!**

**But then....**



**CZI to the rescue!!!**

**\$1.3M to support BINA**

**Chan  
Zuckerberg  
Initiative** 

# New BINA Opportunities



**Support for running Regional Meetings & Workshops**



**Get involved with the WGs**



**Exchange of Expertise Visits**

New technologies, facility management, training & education



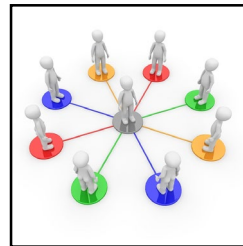
**Professional Development Activities**

Core Facility Leadership and Management Training courses



**Metrology Suitcase**

Program to ship out all the tools/protocols/procedures for QC testing and database resources to upload results.



**Building the BINA Network**

LMFM meeting with BioImaging UK/RMS

Collaboration with Global BioImaging

**Copied from our friends in France!**

*RTMFM - Microscopie Photonique de  
Fluorescence Multidimensionnelle*

# Two new full-time positions! Project Manager & Administrator



**Help organize regional meetings & workshops**



**Co-Ordinate WG activities**



**Organize exchange of expertise visits**



**Organize professional development activities**



**Set up metrology suitcase program**



**Build the BINA Network – Corporate Partners, Imaging Facilities, International Organizations**

**Information on how to apply coming soon!**

# Join BINA Today!



<https://www.bioimagingna.org/join>

**We welcome all volunteers who want to get involved!**