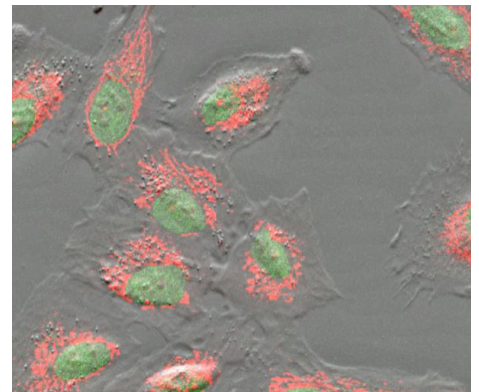




Did you know that you can automate multimodal imaging?

Using Celldiscoverer 7 with integrated LSM 900 and Airyscan 2 allows you to combine the best imaging modes seamlessly.

Fluorescent channels can be acquired in confocal mode using highly sensitive GaAsP detectors while the Phase Gradient Contrast is acquired with a camera.



Human lung epithelial cell line A549 stained with MitotrackerOrange (mitochondria) and SIR-DNA (nuclei). With Celldiscoverer 7 and LSM 900 you seamlessly combine two imaging modes. Fluorescent channels were acquired in confocal mode using highly sensitive GaAsP detectors while the Phase Gradient Contrast is acquired with a camera. Sample courtesy of A.C. Hocke, Charité, Berlin, Germany.

I am excited to discuss how the LSM 9 family can benefit your specific research challenges or facility. Please contact me to schedule a live discussion.

