

# Myeloma cells with villous and hairy-like cytoplasmic projections

Abbas Abdulsalam<sup>1,2</sup>, Alison Morilla<sup>1</sup>, Shireen Kassam<sup>1</sup> and Ricardo Morilla<sup>1\*</sup>

<sup>1</sup>Royal Marsden Hospital, Sutton-UK

<sup>2</sup>Deputed from Al-Yarmouk Teaching Hospital, Baghdad-Iraq

\* Corresponding author

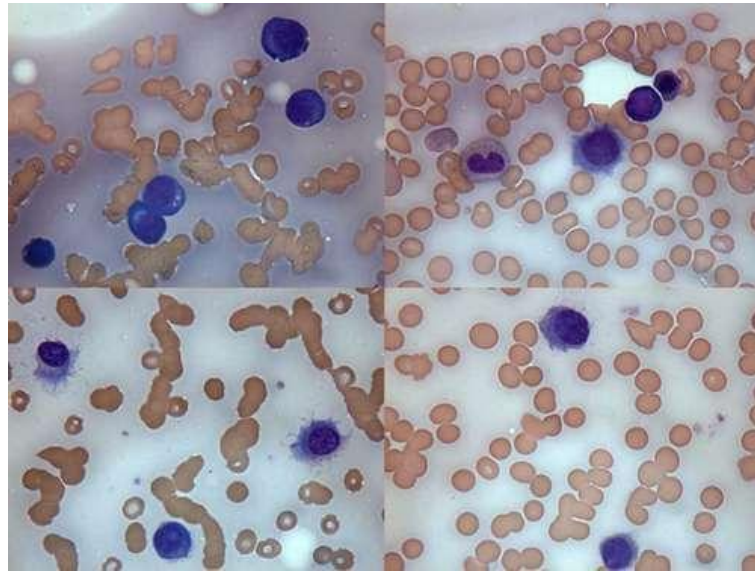


Figure 1

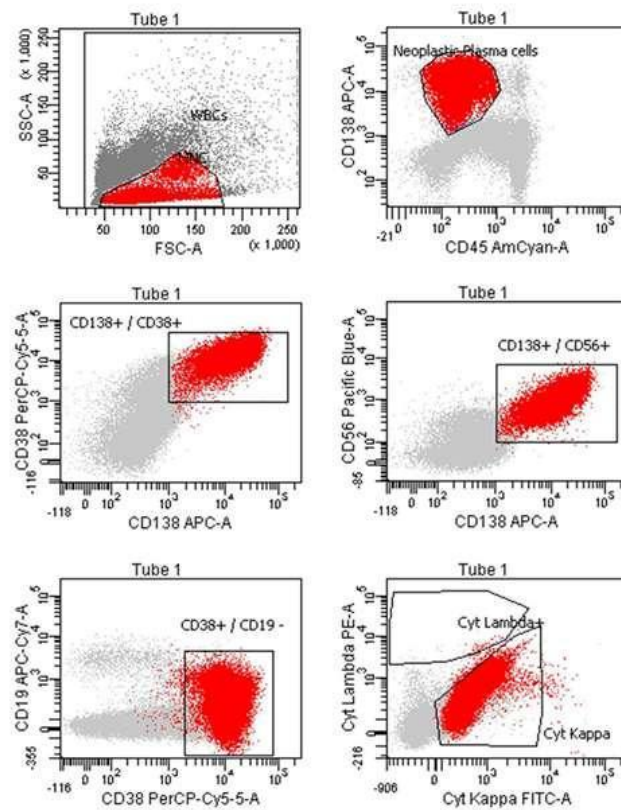


Figure 2:

A 58 year old female, presented with features of anemia. Her FBC: Hb 75 g/l, WBC count  $6.1 \times 10^9/l$ , platelet count  $163 \times 10^9/l$ . Peripheral blood film showed normal WBC differential and rouleaux formation. In addition she had an M-Band of IgG- $\kappa$  with a concentration of 35 g/l.

In the WHO 2008 classification of plasma cell myeloma there is a comprehensive description of several morphological variants of myeloma plasma cells that, other than the presence of crystalline rods, are not pathognomonic since they may be found in reactive plasma cells. However, myeloma plasma cells with villous and hairy-like projections are not described in the WHO 2008 classification and to the best of the authors' knowledge there is no morphological counterpart for these cytoplasmic projections in reactive plasma cells.